

Quad-Disc Static Pressure Port SPP-1TM

DATA SHEET

FEATURE SUMMARY

- Based on Nishiyama-Berdard 1989 Design
- Anodized Aluminum
- Tool-less disassembly
- Standard 1/4" tube fitting
- Made in US



DESCRIPTION

Static Pressure Port SPP-1TM is designed to be connected to barometric pressure sensors in order to minimize the effects of pressure fluctuations caused by air turbulence.

Barometric pressure sensors that are installed in a field enclosure are often vented at the bottom or sides of the field enclosure. This can result in pressure anomalies from different wind directions and speeds.

SPP-1 ensures that pressure measurements are independent of wind direction.

SPP-1 can be completely disassembled and cleaned in the field, facilitating routine maintenance and minimizing the vulnerability created by insect and bird fouling.

Applications include:

- Aviation
- Pressure localization services
- Meteorology
- Mobile weather stations
- Applications requiring omnidirectional pressure response

KEY FEATURES

Exterior Construction: Anodized aluminum. Stainless steel fasteners.

Tube Connection: Standard 1/4-18 NPT pipe thread installed with 1/4" tube barbed fitting.

Accessory Adapter: Top post comes as standard or as an accessory mount with 5/8-11 UNC threaded.

Mounting: **SPP-1** mounting adapter fits over the end of a 3/4" structural pipe or inside of standard 1" structural pipe fittings.

Outer Diameter – 1.31" (32.1 mm)

Inner Diameter – 1.07" (26.2 mm)

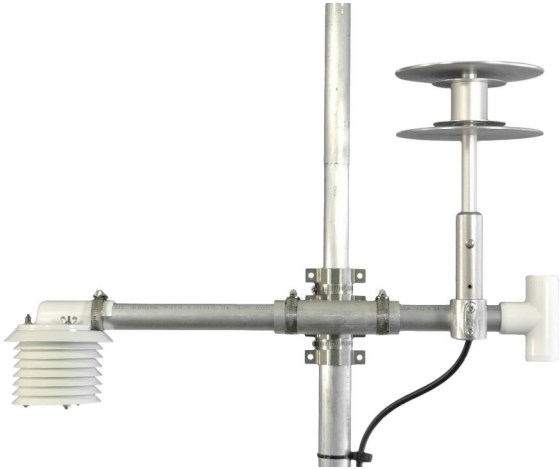


Image 2: SPP-1 Mounted on Dyacon weather station.



Image 1: SPP-1 separated from mounting adapter.

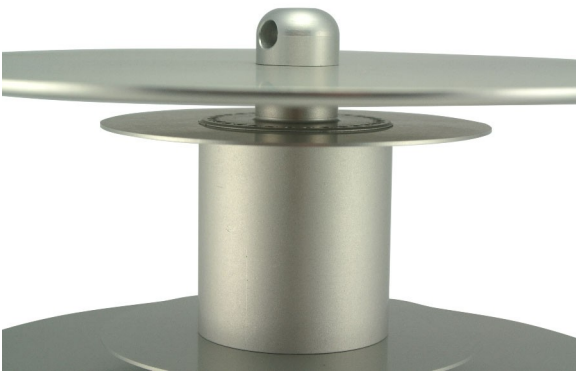


Image 4: Standard top screw.



Image 3: Accessory top screw.



Image 6: SPP-1 disassembled.



Image 5: SPP-1 with GNSS antenna on accessory top screw.