

20 W, 9 AH Solar Power Upgrade Kit KIT-20WUP[™]

DATA SHEET

FEATURE SUMMARY

- 20 W solar panel
- Multi-angle mounting brackets
- 9 Ah SLA Battery
- Band clamps and Hardware
- Battery cable
- Made in US

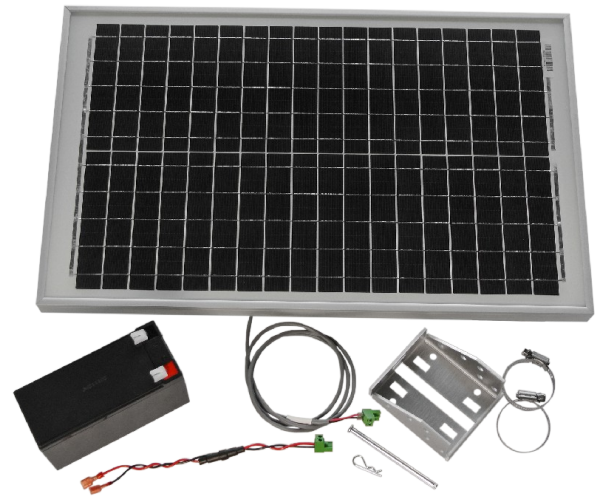
DESCRIPTION

Standard Dyacon MS-100[™] weather stations use a 10 W solar panel and 7 Ah battery. This is suitable for most locations below latitude 45°. For northern latitudes and areas with more snow or cloud cover, a 20 W panel provides additional power margin.

KIT-20WUP[™] is available as a factory upgrade option during initial system configuration. It can also be purchased as a separate power kit for weather stations already in the field.

As a factory upgrade (variant -001), a 9 Ah battery and 20 W panel are used during weather station configuration instead of the typical 10 W panel and 7 Ah battery.

The field upgrade kit (variant -002) ships with all of the components required to install the upgrade in a Dyacon weather station.



KEY FEATURES

Construction

Brackets are composed of 5052 aluminum. Band clamps are stainless steel. Clevis and cotter pins are zinc-plated steel.

Installation

Dyacon solar panel bracket installs to a pole or walls.

The angle of the solar panel can be adjusted without any tools. Positions include 30° down angle, 45°, 60°, and 90°. (The 90° position requires a second pin. Contact Dyacon if this position is needed.)

Components

- 20 W solar panel
- Solar panel bracket
- Battery
- Power cable with in-line fuse
- Pole/wall bracket
- Band clamps
- Clevis pin and cotter pin



Image 1: Pole/wall bracket.



Image 2: Notice the top tab on the solar panel bracket.

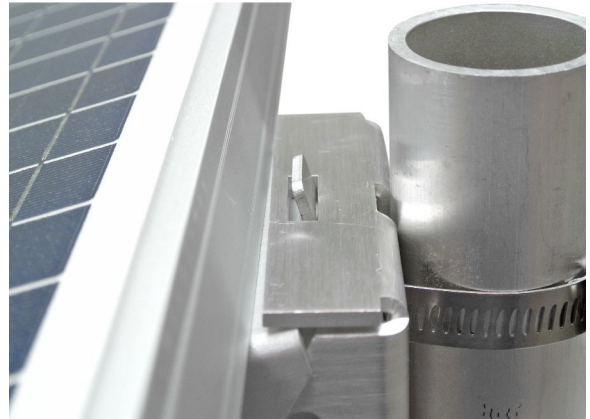


Image 3: Tab inserts into pole bracket.



Image 4: Solar panel angle can be adjusted to several positions without tools.

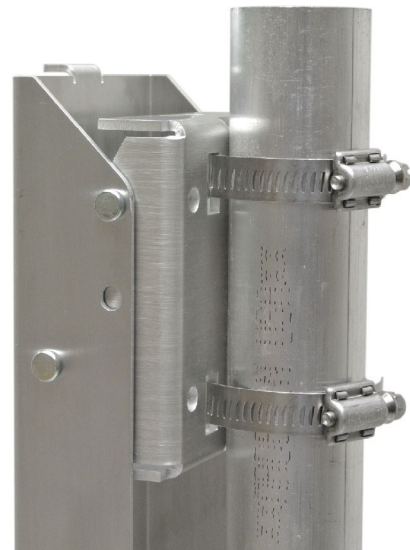


Image 5: Vertical position requires two pins.



Image 8: 30° down angle.



Image 6: 45° down angle.



Image 7: 60° down angle.



Image 9: 90° down angle. (Two pins required.)