

Tripod-1TM

DATA SHEET

FEATURE SUMMARY

- Modular construction
- Multiple configurations
- Single tool assembly
- Field configurable
- 6061 aluminum
- Adjustable legs

DESCRIPTION

Tripod-1TM is a field-serviceable, field-configurable, modular, aluminum tripod.

The same segments are used for the mast and legs, allowing the installer to reconfigure the tripod in the field to accommodate multiple conditions and repair scenarios.

Tripod-1TM requires only a single wrench to adjust the guy cables.

Tripod-1TM is suitable for weather station equipment, light-weight antennas, and lighting.

The mast may be erected from the bottom through the center hub. This facilitates installation and service by allowing the mast to be raised and lowered without removing stakes or requiring a ladder.

KEY FEATURES

Construction: 6061 machined and welded aluminum.

The mast is constructed of 1" (1.32"/33.5 mm) pipe, which is compatible with standard structural pipe fittings.

Quick-release buttons lock each segment and a quick-release pin secures the mast in the elevated position (as pictured).

Standard wire rope clips are used for the stainless steel wire rope guy lines.

Stainless steel D-shackle, turnbuckle, and thimble.

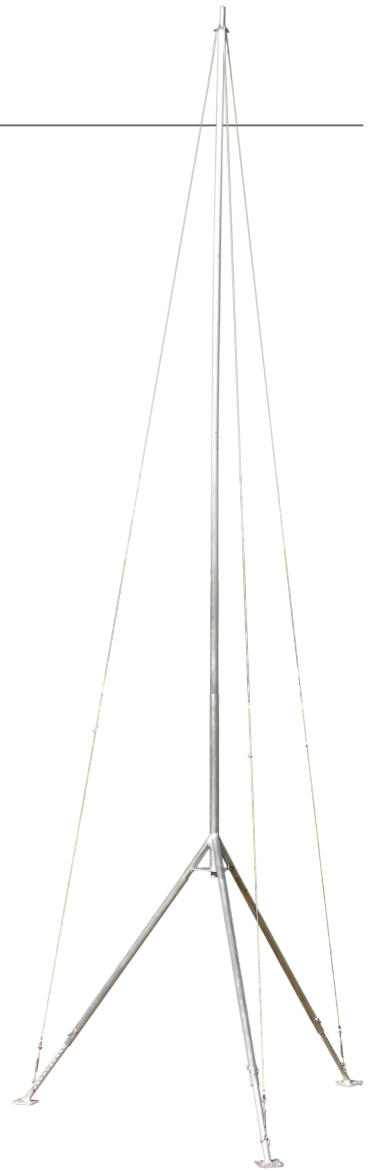
Assembly Tools: 5.5 mm (7/32") wrench to adjust the guy cables. Additional tools may be required for stakes or screws, depending on installation location.

Configuration: **Tripod-1TM** is available in 7 - and 10-segment kits.

Mast segments and leg segments are identical and may be interchanged to for a number of field configurations.

Guy cables can be attached to the legs for portability and minimal installation area, or staked separately.

Each adjustable leg has a large foot with holes for 1/2" rebar and 3/8" screws.

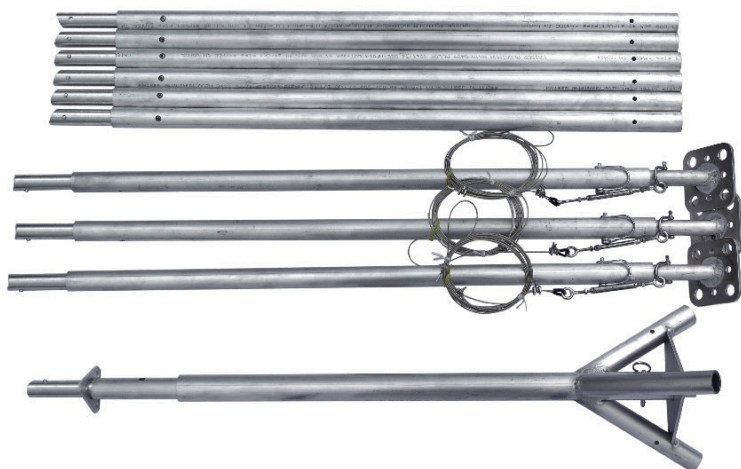


MECHANICAL – 7-SEGMENT

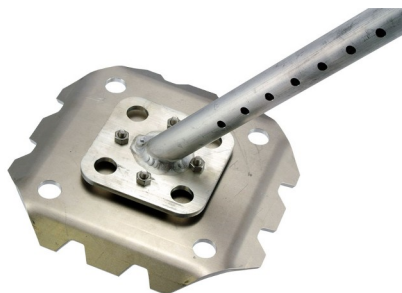
Material	3/4", 1", and 1 1/4" 6061 Aluminum pipe
Weight	9.8 kg (21.6 lb)
Functional Segment Length	33.5 mm diameter x 0.91 m (1.3 in diameter x 3 ft)
Max Height ¹	4.76 m (15.6 ft)
Storage/Ship Dimensions	280 x 280 x 1070 mm (11 x 11 x 42 in)
Leg Adjustment	Pin, 25.4 mm (1 in) centers
Max Slope ²	13° (23%)
Max Base Diameter	1.8 m (5.8 ft)
Max Triangular Base	Approximately 1.78 m (5.8 ft) per side
Leg Base	89 mm x 89 mm (3.5 in x 3.5 in)
Guy Cable	2 mm x 6.1 m (1/16 in x 20 ft)

MECHANICAL – 10-SEGMENT

Material	3/4", 1", and 1 1/4" 6061 Aluminum pipe
Weight, Max	10-segment: 12.4 kg (27.2 lb)
Max Height ³	6-segment: 3.5 m (11.4 ft) - Standard 7-segment: 4.4 m (14.4 ft) 10-segment: 5.3 m (17.4 ft)



As-shipped. 10-segment tripod shown, 6-segment is standard.



Sand/Snow plate option.

ACCESSORIES

Stakes	13 mm x 45 mm (1/2" rebar x 18")
Structural Fittings	Compatible with 1" structural pipe fittings.
Feet	Sand/Snow feet accessories.

- 1 – Single segment in each leg position and four mast segments. (See top image.)
- 2 – One leg down hill in maximum height position. Uphill legs in storage (lowest) position.
- 3 – Two segments in each leg position and four mast segments.



Leg extension and turnbuckle assembly.



Mast insertion from bottom.